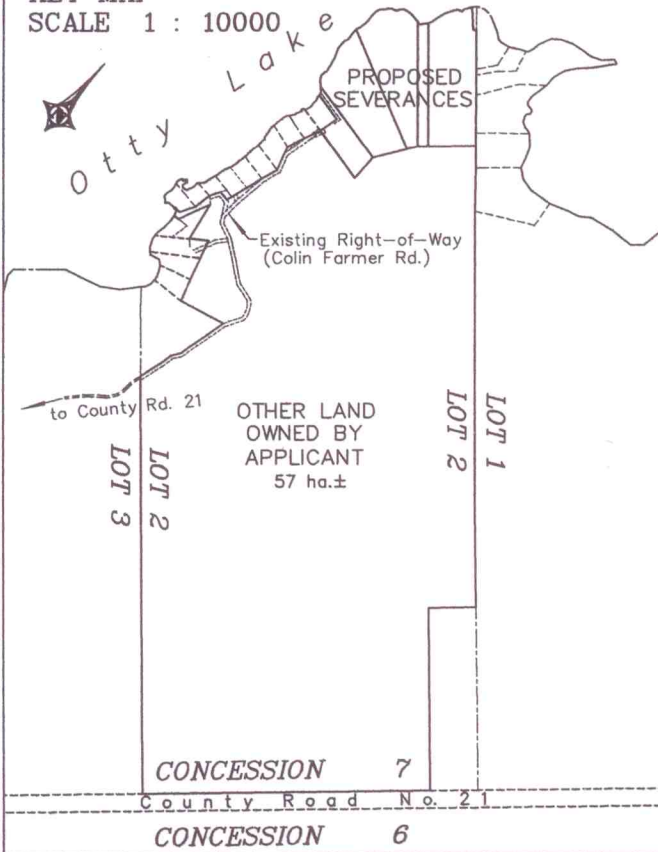


KEY MAP
SCALE 1 : 10000



SKETCH SHOWING
PROPOSED
SEVERANCES
SITUATED IN LOT 2
CONCESSION 7
GEOGRAPHIC TOWNSHIP
OF NORTH BURGESS
TAY VALLEY TOWNSHIP
COUNTY OF LANARK

JOB No. PP-09-813
DRAWING # PP-09-813-ver3
AUGUST 27, 2009

**McINTOSH
PERRY**
Surveying Inc.



3240 Drummond Con. 5A
R.R. #7
Perth, Ont.
K7H 3C9
Tel.: 613 267 6524
Fax: 613 267 7992

SCALE 1 : 2000

